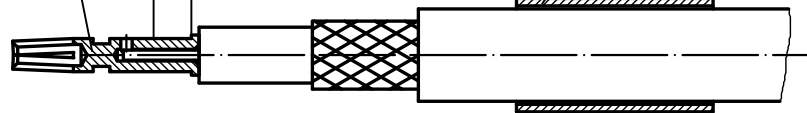
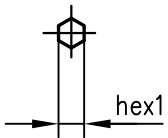
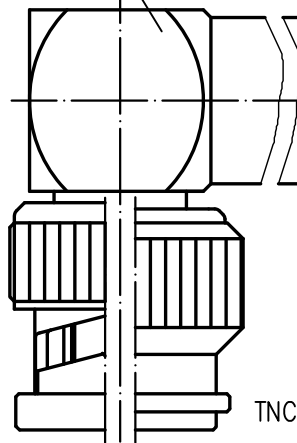
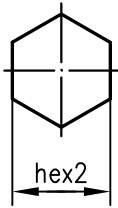


Kontaktbuchse *contact socket* Crimbereich *crimp area* Crimprohr *crimp ferrule*

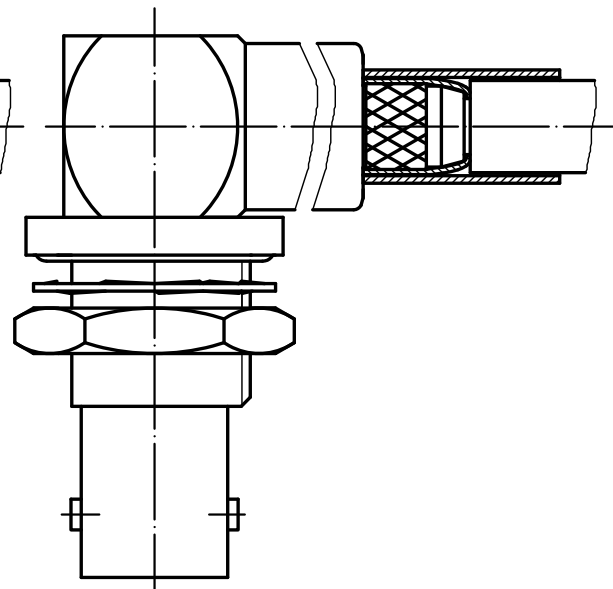


Gehäuse *housing* Crimbereich *crimp area* Abschirmung *braid*
Folie in den Crimpanschluß schieben*
*foil goes inside housing**



BNC

TNC



* nur für Kabel mit Folie / *only for cables with foil*

XX	Crimpeinsatz <i>crimp insert</i>	6kt.1 x Länge <i>hex1 x length</i>	6kt.2 x Länge <i>hex2 x length</i>
05	N01003A0005	1.69x2.5	5.41x8
31	N01003A0056	1.69x2.5	6.48x8

d	23387	16.11.11	MA
c	17233	25.11.05	JA
b	12656	06.07.01	MA
a	7000	14.08.96	BE
Index <i>index</i>	Änderung <i>modification</i>	Datum <i>date</i>	Name <i>name</i>

	Datum <i>date</i>	Name <i>name</i>
Gez. <i>drawn</i>	09.05.90	Loh
Gepr. <i>app'd</i>	04.07.94	PU

Series BNC/TNC crimp
Serie BNC/TNC crimp

Untert.-
Art **R** TG-Nr.
T00100A0600



Original **A4** Blatt **1/1**
sheet

Maßstab **2:1**
scale

Ersatz für/
replacement for