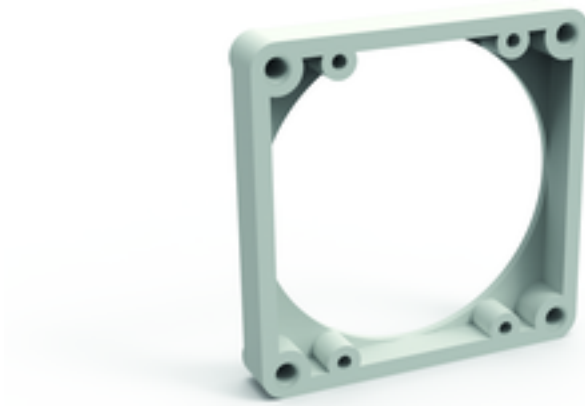


Accessories sockets - 60x60

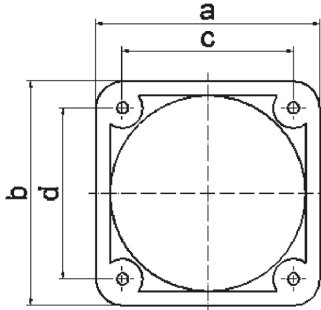


| Product description | |
|------------------------------|--------------------------------|
| BALS-Prd.-Nr | 187 |
| EAN | 4024941001878 |
| Product category | Mounting frame, Mounting frame |
| Colour code | grey RAL 7035, grey RAL 7035 |
| Height | 70mm, 70mm |
| Width | 70mm, 70mm |
| Depth | 12mm, 12mm |
| Flange size vertical in mm | 70mm, 70mm |
| Flange size horizontal in mm | 70mm, 70mm |

| Product description | |
|--------------------------------|----------------------|
| Drill hole dist. vertical mm | 60mm, 60mm |
| Drill hole dist. horizontal mm | 60mm, 60mm |
| Material of enclosure | Polyamide, Polyamide |

| Logistics data | |
|----------------|------------------|
| Weight/pcs | 0.014 kg / Piece |
| Packaging | Bag |
| Content amount | 1 ST |
| EAN | 4024941001878 |
| Length | 12 mm |
| Width | 70 mm |
| Height | 70 mm |
| Weight | 0.015 kg |
| Volume | 58.8 ccm |
| Packaging | Carton |
| Content amount | 100 ST |
| EAN | 4024941326988 |
| Length | 275 mm |
| Width | 175 mm |
| Height | 137 mm |
| Weight | 1.525 kg |

| Logistics data | |
|----------------|-------------|
| Volume | 5,737.5 ccm |



| a | b | c | d | e | Bestell-Nr. |
|----|----|----|----|----|-------------|
| 50 | 50 | 38 | 38 | 13 | 1843 |
| 54 | 54 | 44 | 44 | 10 | 1847 |
| 57 | 66 | 47 | 47 | 10 | 1848 |
| 60 | 60 | 50 | 50 | 10 | 1849 |
| 62 | 62 | 52 | 52 | 10 | 1850 |
| 62 | 70 | 52 | 60 | 10 | 1851 |

30 MB 182