

flush-mounting caravan appliance inlet - housing dimensions 163x102 white pivotable plug



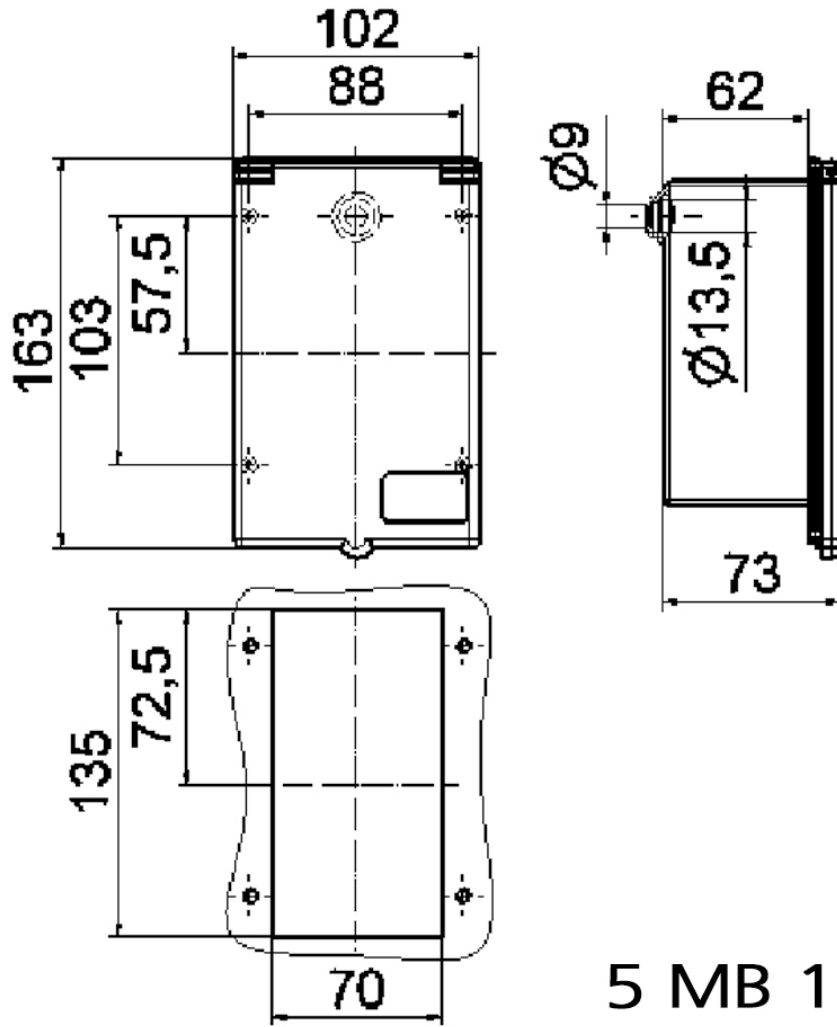
| Product description | |
|---------------------------|--|
| BALS-Prd.-Nr | 254 |
| EAN | 4024941002547 |
| Product category | flush-mounting caravan appliance inlet |
| Current | 16A |
| Number of poles | 3p |
| Arrangement of phases | 2P+PE |
| Position of earth contact | 6 h |
| Voltage | 200 - 250V~ |

| Product description | |
|------------------------|---|
| Frequency | 50/60Hz |
| Protection degree | IP44 |
| Colour code | white |
| Colour of appliance | Housing cover blue RAL 5015, Housing bottom blue RAL 5015, Collar blue RAL 5015 |
| Connection design | with screw terminal |
| Maximum conductor size | 2,5 qmm |
| Cable entry | up to diameter 13,5 |
| Height | 170mm |
| Width | 102mm |
| Depth | 75mm |
| Dimension of enclosure | 163x102 mm (HxW) |
| Material of enclosure | ABS |
| Contacts | The contacts are brass, The contact carrier is made of polyamide |

| Additional technical properties | |
|---------------------------------|---|
| | The cable entry is one rear sided open, Fixing centers 103x88 built-in opening 135x70 |
| | Pivotable plug, Housing with rubber gasket and frame for intermediate fixing |

| Logistics data | |
|----------------|------------------|
| Weight/pcs | 0.332 kg / Piece |

| Logistics data | |
|----------------|---------------|
| Packaging | Bag |
| Content amount | 1 ST |
| EAN | 4024941002547 |
| Length | 75 mm |
| Width | 102 mm |
| Height | 170 mm |
| Weight | 0.333 kg |
| Volume | 1,300.5 ccm |
| Packaging | Carton |
| Content amount | 10 ST |
| EAN | 4024941965545 |
| Length | 330 mm |
| Width | 216 mm |
| Height | 260 mm |
| Weight | 3.546 kg |
| Volume | 17,062.5 ccm |



5 MB 16