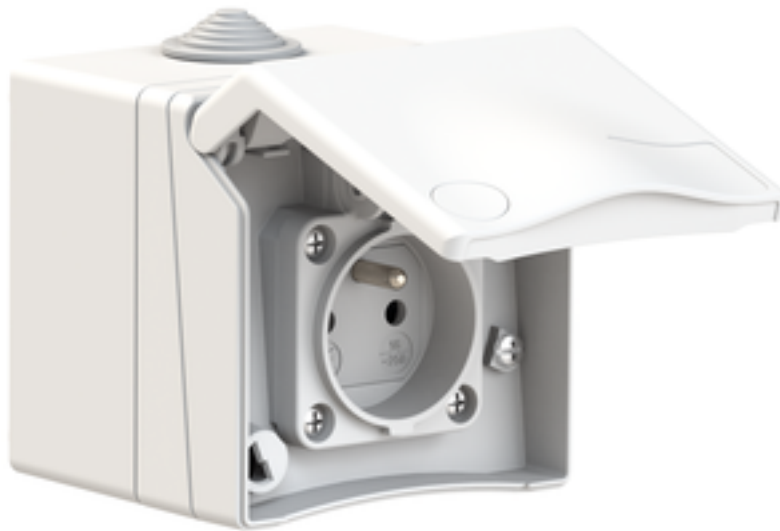


## wall mounting socket outlet domestic type - housing dimensions 90x90



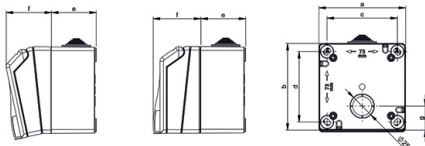
Product description	
BALS-Prd.-Nr	72011
EAN	4024941222402
Product category	Domestic wall mounting socket outlet, straight
Current	16A
Number of poles	3p
Arrangement of phases	2P+PE
Voltage	250V~
Frequency	AC

Product description	
Protection degree	IP44
Colour of appliance	white similar to RAL 9016
Connection design	screwless
Maximum conductor size	2,5 qmm
Cable entry	Anti-kink sleeve
Height	90mm
Width	90mm
Depth	95mm
Dimension of enclosure	90x90 mm
Material of enclosure	ABS + Polycarbonate
Contacts	the contacts are brass nickel plated

Additional technical properties	
	The cable entry is one at top open and one at bottom and one rear side closed, Architecture programme TH, hinged lid with labelling field (optional: key lock), With earth contact Belgian/French standard

Logistics data	
Weight/pcs	0.245 kg / Piece
Packaging	Bag
Content amount	1 ST
EAN	4024941222402
Length	95 mm

Logistics data	
Width	90 mm
Height	90 mm
Weight	0.246 kg
Volume	769.5 ccm
Packaging	Carton
Content amount	6 ST
EAN	4024941222679
Length	370 mm
Width	218 mm
Height	125 mm
Weight	1.643 kg
Volume	9,329.4 ccm



Ampere Poles	16 3	16 4	16 5	32 5	Schutzk. Domestic
a	90,0	90,0	90,0	90,0	90,0
b	90,0	90,0	90,0	90,0	90,0
c	73,0	73,0	73,0	73,0	73,0
d	73,0	73,0	73,0	73,0	73,0
e	47,0	47,0	47,0	47,0	47,0
f	48,0	48,0	48,0	48,0	48,0
g	25,0	25,0	25,0	25,0	25,0
Cond. mm <sup>2</sup> min.	1,0	1,0	1,0	2,5	1,0
Cond. mm <sup>2</sup> max.	4,0	4,0	4,0	10	2,5

4MB463