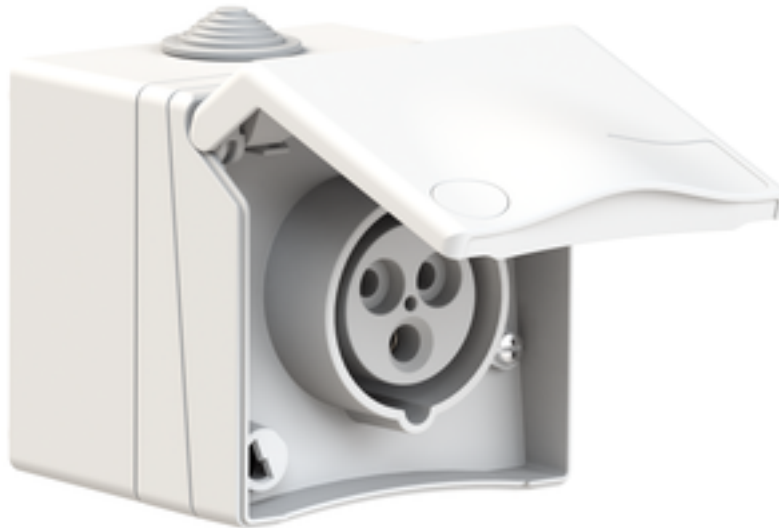


wall mounting socket outlet - housing dimensions 90x90



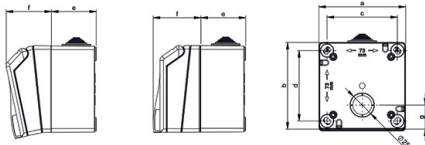
Product description	
BALS-Prd.-Nr	110710
EAN	4024941222280
Product category	Wall mounting socket outlet
Current	16A
Number of poles	3p
Arrangement of phases	2P+PE
Position of earth contact	6 h
Voltage	200 - 250V~
Frequency	50/60Hz

Product description	
Protection degree	IP44
Colour code	blue RAL 5015
Colour of appliance	white similar to RAL 9016
Connection design	with screw terminal
Maximum conductor size	4,0 qmm
Cable entry	Anti-kink sleeve
Height	90mm
Width	90mm
Depth	95mm
Dimension of enclosure	90x90 mm
Material of enclosure	ABS + Polycarbonate
Contacts	the contacts are brass nickel plated

Additional technical properties	
	Architecture programme TH, hinged lid with labelling field (optional: key lock), The cable entry is one at top open and one at bottom and one rear side closed

Logistics data	
Weight/pcs	0.282 kg / Piece
Packaging	Bag
Content amount	1 ST
EAN	4024941222280

Logistics data	
Length	95 mm
Width	90 mm
Height	90 mm
Weight	0.283 kg
Volume	769.5 ccm
Packaging	Carton
Content amount	6 ST
EAN	4024941222587
Length	370 mm
Width	218 mm
Height	125 mm
Weight	1.865 kg
Volume	9,329.4 ccm



Ampere Poles	16 3	16 4	16 5	32 5	Schutzk. Domestic
a	90,0	90,0	90,0	90,0	90,0
b	90,0	90,0	90,0	90,0	90,0
c	73,0	73,0	73,0	73,0	73,0
d	73,0	73,0	73,0	73,0	73,0
e	47,0	47,0	47,0	47,0	47,0
f	48,0	48,0	48,0	48,0	48,0
g	25,0	25,0	25,0	25,0	25,0
Cond. mm ² min.	1,0	1,0	1,0	2,5	1,0
Cond. mm ² max.	4,0	4,0	4,0	10	2,5

4MB463

