

flush-mounting caravan appliance inlet - housing dimensions 163x102 white pivotable plug



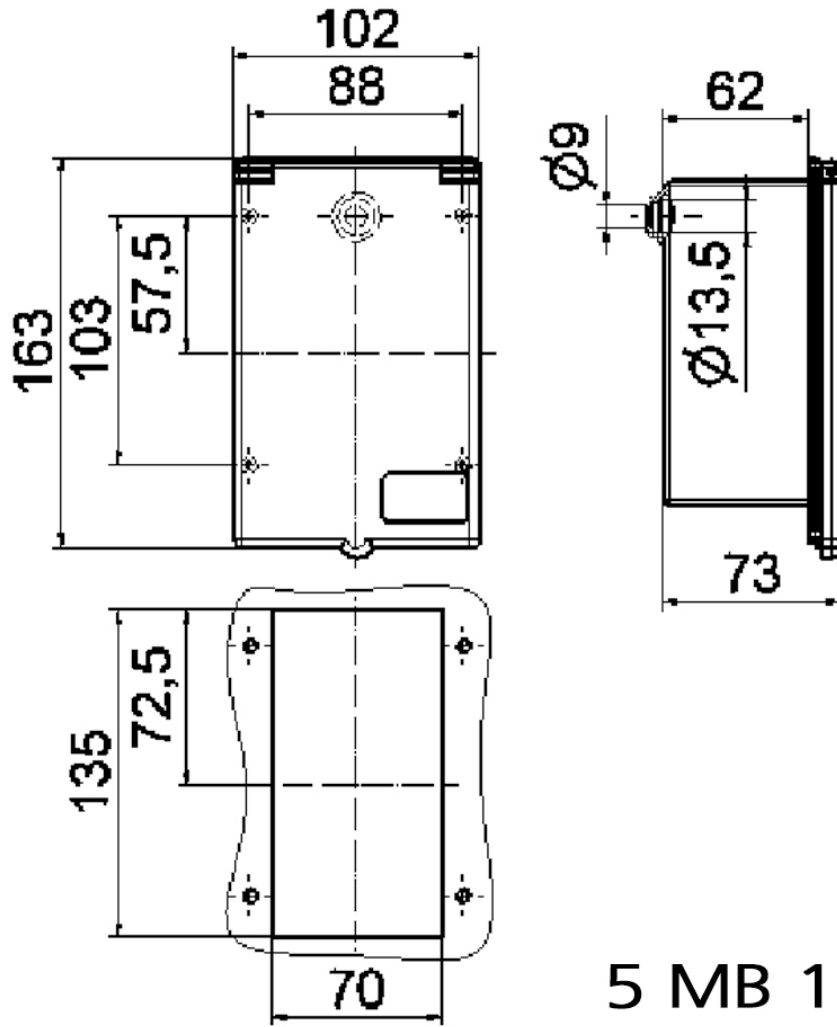
Product description	
BALS-Prd.-Nr	251
EAN	4024941002516
Product category	flush-mounting caravan appliance inlet
Current	16A
Number of poles	3p
Arrangement of phases	2P+PE
Position of earth contact	6 h
Voltage	200 - 250V~

Product description	
Frequency	50/60Hz
Protection degree	IP44
Colour code	white
Colour of appliance	Housing cover blue RAL 5015, Housing bottom blue RAL 5015, Collar blue RAL 5015
Connection design	with screw terminal
Maximum conductor size	2,5 qmm
Cable entry	up to diameter 13,5
Height	170mm
Width	102mm
Depth	75mm
Dimension of enclosure	163x102 mm (HxW)
Material of enclosure	ABS
Contacts	The contacts are brass, The contact carrier is made of polyamide

Additional technical properties	
	Fixing centers 103x88 built-in opening 135x70, The cable entry is one rear sided open
	Pivotable plug

Logistics data	
Weight/pcs	0.296 kg / Piece
Packaging	Bag

Logistics data	
Content amount	1 ST
EAN	4024941002516
Length	75 mm
Width	102 mm
Height	170 mm
Weight	0.297 kg
Volume	1,300.5 ccm
Packaging	Carton
Content amount	10 ST
EAN	4024941968560
Length	330 mm
Width	216 mm
Height	260 mm
Weight	3.186 kg
Volume	17,062.5 ccm



5 MB 16