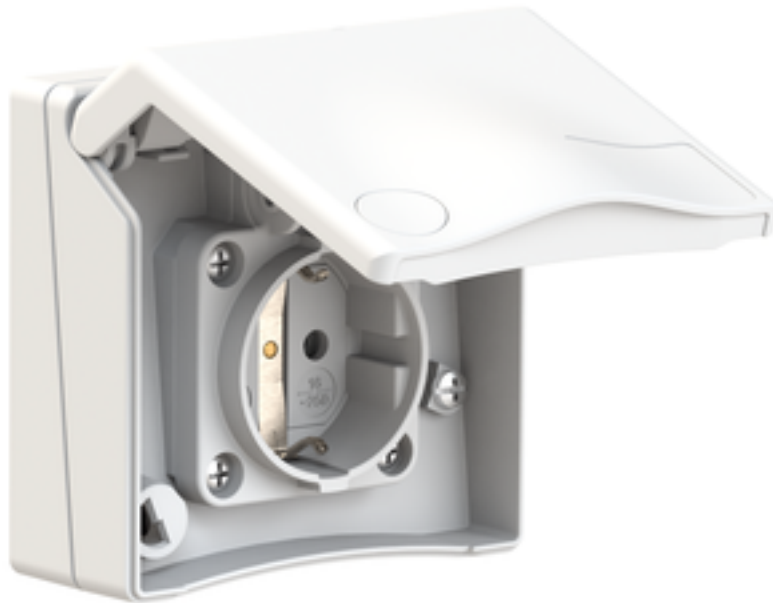


panel mounting socket outlet, straight - flange 90x90,
fixing centers 60x60



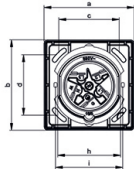
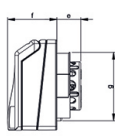
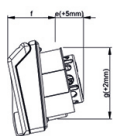
Product description	
BALS-Prd.-Nr	71010
EAN	4024941222358
Product category	Domestic panel mounting socket outlet, straight, System F German standard
Current	16A
Number of poles	3p
Arrangement of phases	2P+PE
Voltage	250V~
Frequency	AC

Product description	
Protection degree	IP44
Colour of appliance	white similar to RAL 9016
Connection design	screwless
Maximum conductor size	2,5 qmm
Cable entry	other
Height	90mm
Width	90mm
Depth	64mm
Flange size vertical in mm	90mm
Flange size horizontal in mm	90mm
Drill hole dist. vertical mm	60mm
Drill hole dist. horizontal mm	60mm
Material of enclosure	ABS + Polycarbonate
Contacts	the contacts are brass nickel plated

Additional technical properties	
	For mounting in cable trunkings, The connection is rear, Architecture programme TH, hinged lid with labelling field (optional: key lock)

Logistics data	
Weight/pcs	0.159 kg / Piece
Packaging	Bag

Logistics data	
Content amount	1 ST
EAN	4024941222358
Length	64 mm
Width	90 mm
Height	90 mm
Weight	0.16 kg
Volume	518.4 ccm
Packaging	Carton
Content amount	6 ST
EAN	4024941222648
Length	370 mm
Width	218 mm
Height	125 mm
Weight	1.127 kg
Volume	9,329.4 ccm



Ampere Poles	16 3	16 4	16 5	32 5	Schutzk. Domestic
a	90,0	90,0	90,0	90,0	90,0
b	90,0	90,0	90,0	90,0	90,0
c	60,0	60,0	60,0	60,0	60,0
d	60,0	60,0	60,0	60,0	60,0
e	23,0	24,0	24,0	36,0	16,0
f	48,0	48,0	48,0	48,0	48,0
g	66,0	66,0	69,0	78,0	66,0
h	63,0	63,0	63,0	74,0	63,0
i	67,0	67,0	67,0	-	67,0
Cond. mm ² min.	1,0	1,0	1,0	2,5	1,0
Cond. mm ² max.	4,0	4,0	4,0	10	2,5

4MB465