

# wall mounting appliance inlet - housing dimensions 100x75



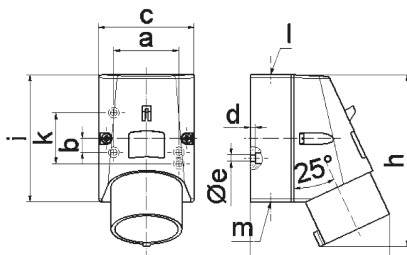
Product description	
BALS-Prd.-Nr	249
EAN	4024941002493
Product category	Wall mounting appliance inlet
Current	16A
Number of poles	4p
Arrangement of phases	3P+PE
Position of earth contact	6 h
Voltage	380 - 415V~

<b>Product description</b>	
Frequency	50/60Hz
Protection degree	IP44
Colour code	red RAL 3000
Colour of appliance	Housing bottom grey RAL 7035, Housing top red RAL 3000
Connection design	with screw terminal
Maximum conductor size	2,5 qmm
Cable entry	top entry M20
Height	135mm
Width	75mm
Depth	106mm
Dimension of enclosure	100x75 mm (HxW)
Material of enclosure	Polyamide
Contacts	The contact carrier is made of polyamide, The contacts are brass

<b>Additional technical properties</b>	
	The cable entry is one at top open and one at bottom and one rear side closed

<b>Logistics data</b>	
Weight/pcs	0.225 kg / Piece
Packaging	Bag
Content amount	1 ST

Logistics data	
EAN	4024941002493
Length	106 mm
Width	75 mm
Height	135 mm
Weight	0.226 kg
Volume	1,073.25 ccm
Packaging	Carton
Content amount	10 ST
EAN	4024941967594
Length	387 mm
Width	222 mm
Height	150 mm
Weight	2.443 kg
Volume	11,029.5 ccm



5 MB 47

Ampere Polzahl	16 3	16 4	16 5
a	51,0	59,0	59,0
b	-	11,0	11,0
c	64,0	75,0	75,0
d	4,0	4,0	4,0
e ø	4,1	5,1	5,1
f	93,0	106,0	110,0
h	122,0	135,0	135,0
i	87,0	100,0	100,0
k	40,0	-	-
l	M20	M20	M20
m	für M20	für M20	für M20
Leiter mm <sup>2</sup> min	1	1	1
Leiter mm <sup>2</sup> max	2,5	2,5	2,5