

# wall mounting appliance inlet - housing dimensions 100x75



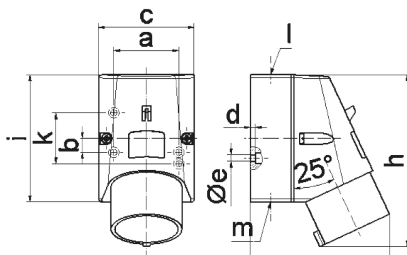
Product description	
BALS-Prd.-Nr	2415
EAN	4024941024150
Product category	Wall mounting appliance inlet
Current	16A
Number of poles	5p
Arrangement of phases	3p+N+PE
Position of earth contact	6 h
Voltage	200/346 - 240/415V~

Product description	
Frequency	50/60Hz
Protection degree	IP44
Colour code	red RAL 3000
Colour of appliance	Housing bottom grey RAL 7035, Housing top red RAL 3000
Connection design	with screw terminal
Maximum conductor size	2,5 qmm
Cable entry	top entry M20
Height	135mm
Width	75mm
Depth	110mm
Dimension of enclosure	100x75 mm (HxW)
Material of enclosure	Polyamide
Contacts	The contact carrier is made of polyamide, The contacts are brass

Additional technical properties	
	The cable entry is one at top open and one at bottom and one rear side closed

Logistics data	
Weight/pcs	0.249 kg / Piece
Packaging	Bag
Content amount	1 ST

Logistics data	
EAN	4024941024150
Length	110 mm
Width	75 mm
Height	135 mm
Weight	0.25 kg
Volume	1,113.75 ccm
Packaging	Carton
Content amount	10 ST
EAN	4024941827904
Length	387 mm
Width	222 mm
Height	150 mm
Weight	2.683 kg
Volume	11,029.5 ccm



5 MB 47

Ampere	16	16	16			
Polzahl	3	4	5			
a	51,0	59,0	59,0			
b	-	11,0	11,0			
c	64,0	75,0	75,0			
d	4,0	4,0	4,0			
e ø	4,1	5,1	5,1			
f	93,0	106,0	110,0			
h	122,0	135,0	135,0			
i	87,0	100,0	100,0			
k	40,0	-	-			
l	M20	M20	M20			
m	für M20	für M20	für M20			
Leiter mm <sup>2</sup> min	1	1	1			
Leiter mm <sup>2</sup> max	2,5	2,5	2,5			