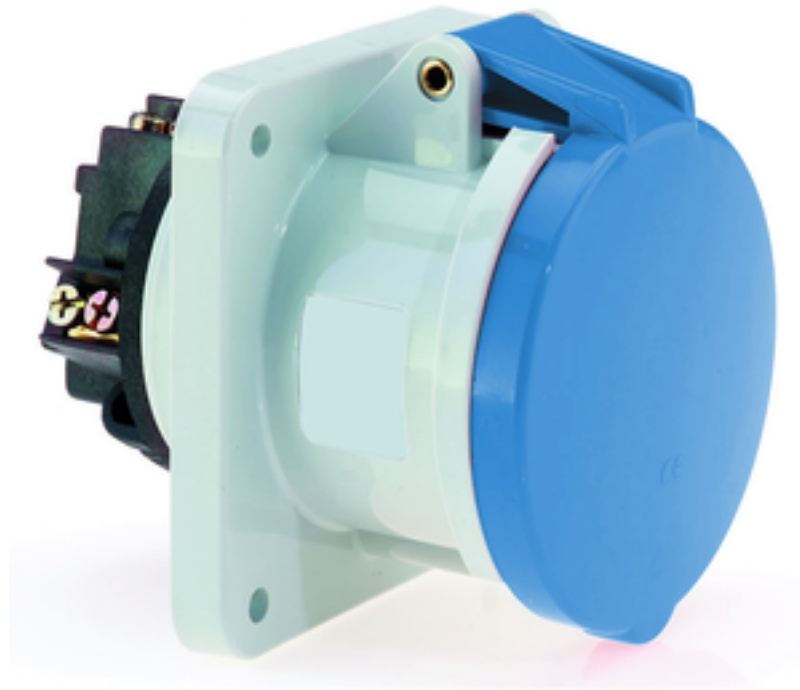


panel mounting socket outlet, straight - flange 107x100 fixing centers 85x77

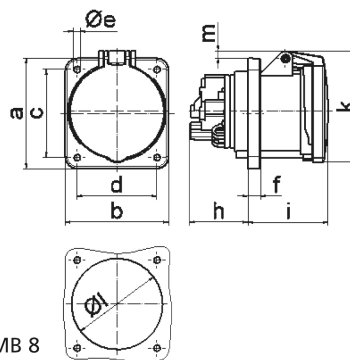


Product description	
BALS-Prd.-Nr	1307
EAN	4024941013079
Product category	Panel mounting socket outlet, straight
Current	63A
Number of poles	3p
Arrangement of phases	2P+PE
Position of earth contact	6 h
Voltage	200 - 250V~

Product description	
Frequency	50/60Hz
Protection degree	IP44
Colour code	blue RAL 5015
Colour of appliance	Hinged lid blue RAL 5015, Enclosure grey RAL 7035
Connection design	screw terminal as box terminal with Kontex-contact
Maximum conductor size	25.0 qmm
Cable entry	other
Height	114mm
Width	100mm
Depth	134mm
Flange size vertical in mm	107mm
Flange size horizontal in mm	100mm
Drill hole dist. vertical mm	85mm
Drill hole dist. horizontal mm	77mm
Material of enclosure	Polyamide
Contacts	The contact carrier is made of high temperature resistant material, the contacts are brass nickel plated

Logistics data	
Weight/pcs	0.415 kg / Piece
Packaging	Bag
Content amount	1 ST

Logistics data	
EAN	4024941013079
Length	134 mm
Width	100 mm
Height	114 mm
Weight	0.416 kg
Volume	1,527.6 ccm
Packaging	Carton
Content amount	5 ST
EAN	4024941953900
Length	295 mm
Width	185 mm
Height	215 mm
Weight	2.239 kg
Volume	9,975 ccm

 <p>4 MB 8</p>	Ampere	63	63	63				
	Polzahl	3	4	5				
	a	107,0	107,0	107,0				
	b	100,0	100,0	100,0				
	c	85,0	85,0	85,0				
	d	77,0	77,0	77,0				
	e ø	6,5	6,5	6,5				
	f	12,0	12,0	12,0				
	h	56,5	56,5	56,5				
	i	77,0	77,0	77,0				
	k	110,0	110,0	110,0				
	l ø	88,0	88,0	88,0				
	m	7,0	7,0	7,0				
	Leiter mm ² min	6	6	6				
Leiter mm ² max	25	25	25					