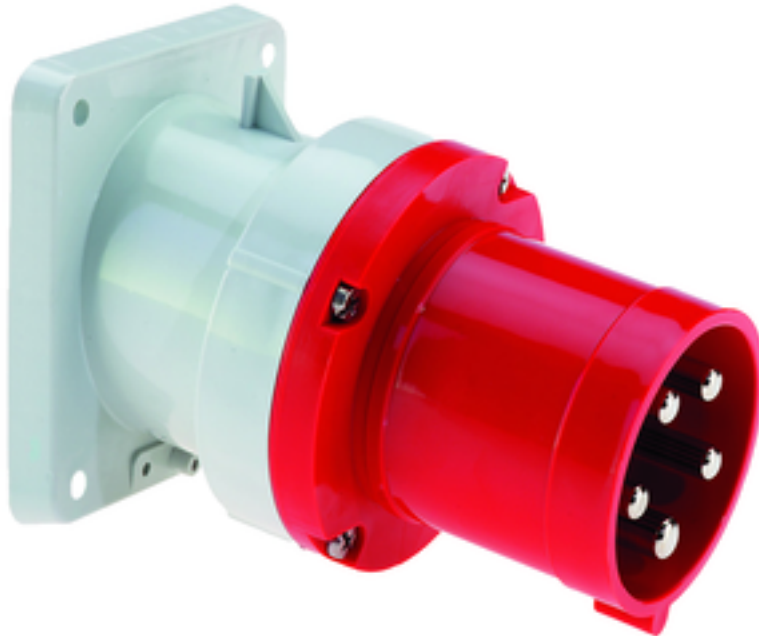


Panel mounting appliance inlet, angled - flange 107x100 fixing centers 85x77

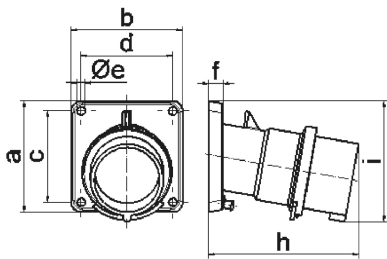


| Product description | |
|---------------------------|---|
| BALS-Prd.-Nr | 2781 |
| EAN | 4024941027816 |
| Product category | TE panel mounting appliance inlet, angled |
| Current | 63A |
| Number of poles | 5p |
| Arrangement of phases | 3p+N+PE |
| Position of earth contact | 6 h |
| Voltage | 200/346 - 240/415V~ |

| Product description | |
|--------------------------------|--|
| Frequency | 50/60Hz |
| Protection degree | IP44 |
| Colour code | red RAL 3000 |
| Colour of appliance | Collar red RAL 3000, Enclosure grey RAL 7035 |
| Connection design | screw terminal as box terminal |
| Maximum conductor size | 16,0 qmm |
| Cable entry | other |
| Height | 118mm |
| Width | 100mm |
| Depth | 155mm |
| Flange size vertical in mm | 107mm |
| Flange size horizontal in mm | 100mm |
| Drill hole dist. vertical mm | 85mm |
| Drill hole dist. horizontal mm | 77mm |
| Material of enclosure | Polyamide |
| Contacts | The contact carrier is made of high temperature resistant material, the contacts are brass nickel plated |

| Additional technical properties | |
|---------------------------------|------------------------|
| | The inclination is 10° |

| Logistics data | |
|----------------|------------------|
| Weight/pcs | 0.625 kg / Piece |
| Packaging | Bag |
| Content amount | 1 ST |
| EAN | 4024941027816 |
| Length | 155 mm |
| Width | 100 mm |
| Height | 118 mm |
| Weight | 0.626 kg |
| Volume | 1,829 ccm |
| Packaging | Carton |
| Content amount | 5 ST |
| EAN | 4024941942201 |
| Length | 295 mm |
| Width | 185 mm |
| Height | 215 mm |
| Weight | 3.289 kg |
| Volume | 9,975 ccm |



5 MB 21

| Ampere | 63 | 63 | 63 | | | |
|----------------------------|-------|-------|-------|--|--|--|
| Polzahl | 3 | 4 | 5 | | | |
| a | 107,0 | 107,0 | 107,0 | | | |
| b | 100,0 | 100,0 | 100,0 | | | |
| c | 85,0 | 85,0 | 85,0 | | | |
| d | 77,0 | 77,0 | 77,0 | | | |
| e \varnothing | 6,5 | 6,5 | 6,5 | | | |
| f | 12,0 | 12,0 | 12,0 | | | |
| h | 155,0 | 155,0 | 155,0 | | | |
| i | 118,0 | 118,0 | 118,0 | | | |
| Leiter mm ² min | 6 | 6 | 6 | | | |
| Leiter mm ² max | 16 | 16 | 16 | | | |
| | | | | | | |
| | | | | | | |