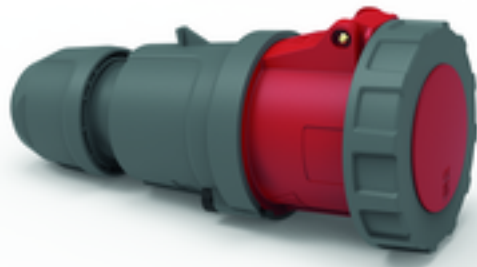


connector - with TE screw terminals, for harsh applications



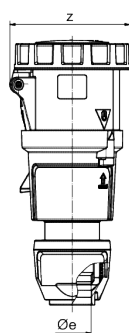
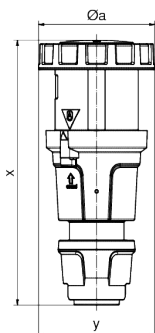
| Product description | |
|---------------------------|---------------|
| BALS-Prd.-Nr | 3185 |
| EAN | 4024941031851 |
| Product category | TE connector |
| Current | 63A |
| Number of poles | 4p |
| Arrangement of phases | 3P+PE |
| Position of earth contact | 6 h |
| Voltage | 380 - 415V~ |

| Product description | |
|------------------------|--|
| Frequency | 50/60Hz |
| Protection degree | IP67 |
| Colour code | red RAL 3000 |
| Colour of appliance | Hinged lid red RAL 3000, Collar red RAL 3000, Pusher black RAL 9005, Housing cover dark grey RAL 7012, Cable gland dark grey RAL 7012, Bajonet ring dark grey RAL 7012 |
| Connection design | screw terminal as box terminal with Kontex-contact |
| Maximum conductor size | 16,0 qmm |
| Cable entry | with cable gland |
| Height | 251mm |
| Width | 110mm |
| Depth | 115mm |
| Material of enclosure | Polyamide |
| Contacts | The contact carrier is made of high temperature resistant material, the contacts are brass nickel plated |

| Additional technical properties | |
|---------------------------------|--|
| | For cable diameter from 16 up to max. 36 mm, Screwless housing connection, Multi-Grip cable gland with gasket and integrated strain relief |

| Logistics data | |
|----------------|-----------------|
| Weight/pcs | 0.72 kg / Piece |
| Packaging | Bag |

| Logistics data | |
|----------------|---------------|
| Content amount | 1 ST |
| EAN | 4024941031851 |
| Length | 115 mm |
| Width | 110 mm |
| Height | 251 mm |
| Weight | 0.721 kg |
| Volume | 3,175.15 ccm |
| Packaging | Carton |
| Content amount | 5 ST |
| EAN | 4024941946315 |
| Length | 325 mm |
| Width | 217 mm |
| Height | 210 mm |
| Weight | 3.806 kg |
| Volume | 13,588.4 ccm |



| | 63 3 | 63 4 | 63 5 |
|---------------------------|---------|---------|---------|
| Ampere | 63 | 63 | 63 |
| Polzahl | 3 | 4 | 5 |
| Ø a | 111,0 | 111,0 | 111,0 |
| Ø e | 36,0 | 36,0 | 36,0 |
| x | 250,0 | 250,0 | 250,0 |
| y | 111,0 | 111,0 | 111,0 |
| z | 115,0 | 115,0 | 115,0 |
| Cond. mm ² min | 6,0 | 6,0 | 6,0 |
| Cond. mm ² max | 16,0 | 16,0 | 16,0 |
| | | | |
| | | | |
| | | | |



