

## wall mounting socket outlet - housing dimensions 87x64



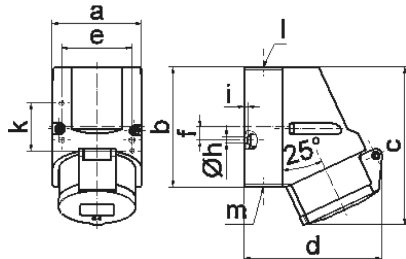
| Product description       |   |
|---------------------------|---|
| BALS-Prd.-Nr              | 11932                                     |
| EAN                       | 4024941119320                             |
| Product category          | Wall mounting socket outlet QUICK-CONNECT |
| Current                   | 16A                                       |
| Number of poles           | 3p  |
| Arrangement of phases     | 2P+PE                                     |
| Position of earth contact | 7 h                                       |
| Voltage                   | 480 - 500V~                               |
| Frequency                 | 50/60Hz                                   |

| Product description    |   |
|------------------------|---|
| Protection degree      | IP44  |
| Colour code            | black RAL 9005  |
| Colour of appliance    | Hinged lid black RAL 9005, Housing bottom grey RAL 7035, Housing top grey RAL 7035, Collar black RAL 9005 |
| Connection design      | screwless spring terminals with Kontex-Kontakt  |
| Maximum conductor size | 4,0 qmm   |
| Cable entry            | top entry M20   |
| Height                 | 118mm   |
| Width                  | 64mm  |
| Depth                  | 104mm   |
| Dimension of enclosure | 87x64 mm (HxW)  |
| Material of enclosure  | Polyamide   |
| Contacts               | The contacts are brass, The contact carrier is made of polyamide  |

| Additional technical properties |   |
|---------------------------------|---|
|                                 | The cable entry is one at top open and one at bottom and one rear side closed |
|                                 | Lower part of housing rotatable by 180°                                       |

| Logistics data |                  |
|----------------|------------------|
| Weight/pcs     | 0.181 kg / Piece |
| Packaging      | Bag              |

| Logistics data |               |
|----------------|---------------|
| Content amount | 1 ST          |
| EAN            | 4024941119320 |
| Length         | 104 mm        |
| Width          | 64 mm         |
| Height         | 118 mm        |
| Weight         | 0.182 kg      |
| Volume         | 785.408 ccm   |
| Packaging      | Carton        |
| Content amount | 10 ST         |
| EAN            | 4024941970082 |
| Length         | 258 mm        |
| Width          | 183 mm        |
| Height         | 212 mm        |
| Weight         | 1.962 kg      |
| Volume         | 8,750 ccm     |



1 MB 7

| Ampere                     | 16      | 16      | 16      |  |  |  |
|----------------------------|---------|---------|---------|--|--|--|
| Polzahl                    | 3       | 4       | 5       |  |  |  |
| a                          | 64,0    | 75,0    | 75,0    |  |  |  |
| b                          | 87,0    | 100,0   | 100,0   |  |  |  |
| c                          | 117,0   | 129,0   | 131,0   |  |  |  |
| d                          | 103,0   | 108,0   | 116,0   |  |  |  |
| e                          | 51,0    | 59,0    | 59,0    |  |  |  |
| f                          | -       | 11,0    | 11,0    |  |  |  |
| h ø                        | 4,1     | 5,1     | 5,1     |  |  |  |
| i                          | 4,5     | 4,5     | 4,5     |  |  |  |
| k                          | 40,0    | -       | -       |  |  |  |
| l                          | M20     | M20     | M20     |  |  |  |
| m                          | für M20 | für M20 | für M20 |  |  |  |
| Leiter mm <sup>2</sup> min | 1,5     | 1,5     | 1,5     |  |  |  |
| Leiter mm <sup>2</sup> max | 4       | 4       | 4       |  |  |  |