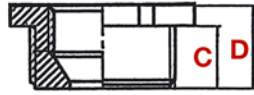


RED PC (PG/PG)



FORM A



FORM B

20.112.180_a



FORM A



FORM B

20.112.180_b

MAT Polycarbonat
Polycarbonate
Polycarbonate

RoHS

TEMP -40°C bis +135°C
-40°C à +135°C
-40°C to +135°C

HALO halogenfrei
sans halogène
halogen free



IP 65 bis 5 bar
IP 65 à 5 bar
IP 65 to 5 bar

Reduktion RED PC

Mit grossem Aussengewinde und kleinem Innengewinde. Selbstdichtend dank konisch geformtem Gewindeansatz.

Réducteur RED PC

Avec un grand filetage mâle et un petit filetage femelle. Etanche grâce à la forme conique de la bride.

Reducer RED PC

With bigger male thread and smaller female thread. Liquidtight due to the conical shape of the flange.


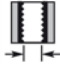


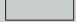
		FORM	C mm	D mm			Plica-Nr.	E-Nr.	VE
PG9	PG7	A	7	15	19		90.7005.164	126 341 010	50
PG11	PG7	B	8	11	22		90.7005.016	126 341 020	50
	PG9	A	8	17	22		90.7005.172	126 341 021	50
PG13.5	PG7	B	9	12	24		90.7005.024	126 341 030	50
	PG9	B	9	12	24		90.7005.032	126 341 031	50
	PG11	A	9	22	24		90.7005.180	126 341 032	50
PG16	PG9	B	9	14	27		90.7005.040	126 341 041	50
	PG11	B	9	14	27		90.7005.059	126 341 042	50
	PG13.5	A	9	21	27		90.7005.199	126 341 043	50
PG21	PG11	B	11	16	32		90.7005.067	126 341 052	50
	PG13.5	B	11	16	32		90.7005.075	126 341 053	25
	PG16	B	11.3	16.3	32		90.7005.202	126 341 054	25
PG29	PG13.5	B	12	18.3	41		90.7005.083	126 341 063	25
	PG16	B	12	18.2	41		90.7005.091	126 341 064	25
	PG21	B	12	18	41		90.7005.210	126 341 065	25
PG36	PG16	B	14	19.3	50		90.7005.105	126 341 074	10
	PG21	B	14	21	55		90.7005.113	126 341 075	25
	PG29	B	14	23	50		90.7005.229	126 341 076	25
PG42	PG29	B	16	23	55		90.7005.130	126 341 196	10
	PG36	B	16	27.5	55		90.7005.237	126 341 197	10
PG48	PG29	B	16	22	60		90.7005.148	126 341 096	10
	PG36	B	16	22.5	60		90.7005.156	126 341 097	25

Technische Änderungen vorbehalten – Sous réserve de changements techniques – Technical alterations reserved

Kabelverschraubungen
Reduktionen Kunststoff

Presse-étoupes
Réducteur plastique

Cable glands
Reducer plastic

		FORM	C mm	D mm	 mm		Plica-Nr.	E-Nr.	VE
PG48	PG42	B	15.5	41.5	60		90.7005.245	126 341 150	25