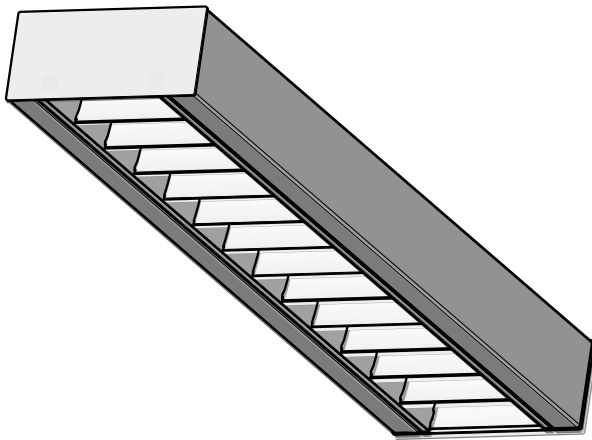


## Montageanleitung

Ⓒ mounting instruction Ⓕ Notice de montage Ⓒ Instrukcja montażu  
Ⓔ Instrucciones de montaje Ⓘ Istruzioni di montaggio

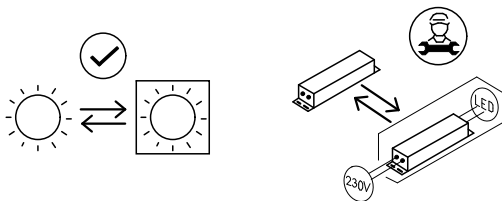
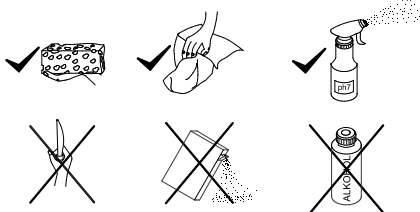
ABRFB-...  
ABRFBI-...  
ABRFBW-...



RIDI Leuchten GmbH  
Hauptstrasse 31 - 33 · D-72417 Jungingen  
Tel. 07477/872-0 · Fax 07477/872-48  
kontakt@ridi-group.de · www.ridi-group.com

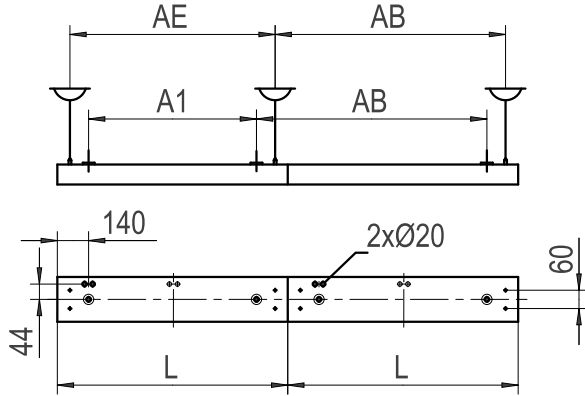
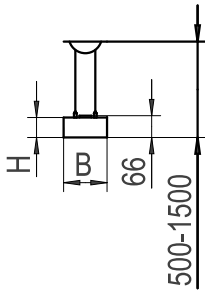
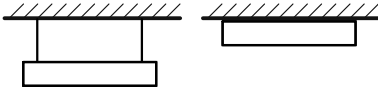


- (D) Für die Installation und für den Betrieb der Leuchten sind die nationalen Sicherheitsvorschriften zu beachten.
- (GB) Please note national safety instructions for installation and operation of this luminaire.
- (F) Pour l'installation et le fonctionnement des luminaires il est impératif de respecter les normes nationales de sécurité en vigueur.
- (PL) W celu prawidłowej instalacji i poprawnego działania oprawy należy przestrzegać krajowych przepisów bezpieczeństwa.
- (E) Para la instalación y la puesta en funcionamiento de las luminarias deben observarse las normas nacionales de seguridad.
- (I) Per l'installazione e il funzionamento delle lampade si fa riferimento alle normative di sicurezza nazionali.
- 



Druckfehler und Irrtum vorbehalten.  
Formelle und technische Änderungen behalten wir uns vor.


Misprints and errors excepted.  
We reserve the right of formal and technical modifications.

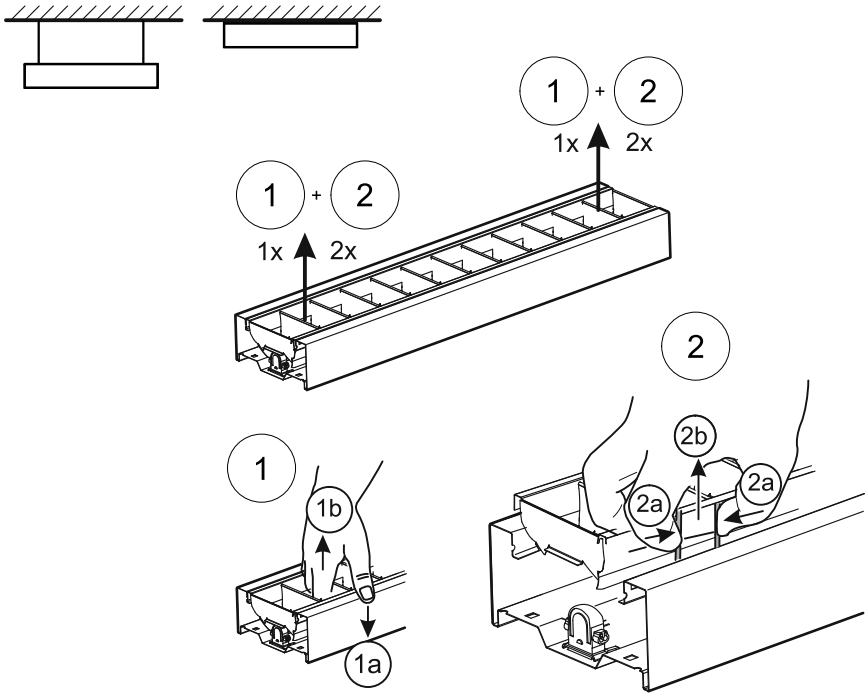


ABRFB...

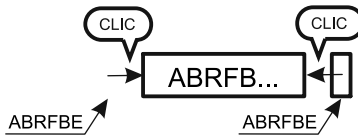
ABRFBI...

ABRFBW...

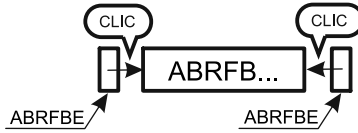
Type	L	B	H	A1	AB	AE	
ABRFB...115/30...	1180	131	60	900	1180	1100	180
ABRFB...145/45...	1480	131	60	1200	1480	1400	200
ABRFBW...115/30	1180	131	60	900	1180	1100	190
ABRFBW...145/45	1480	131	60	1200	1480	1400	300
ABRFBI...115/30	1180	131	60	900	1180	1100	180
ABRFBI...145/45	1480	131	60	1200	1480	1400	200



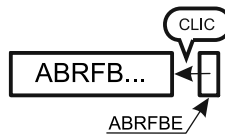
ABRFB...

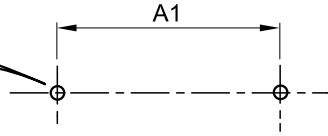
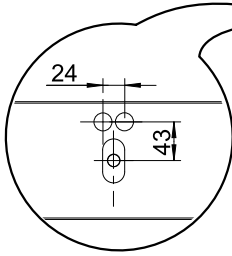
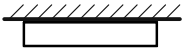


ABRFB... ABRFB...

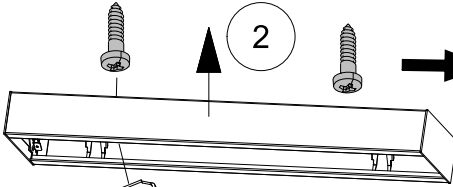


ABRFB... ABRFB...





1



2

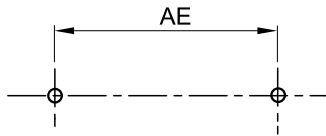
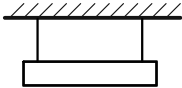
3

2x

bauseits  
to be supplied on-site  
À prévoir sur place  
we wasnym zakresie  
por parte del cliente  
a cura del cliente



3/8



1



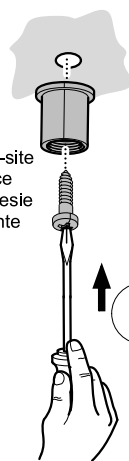
0008286



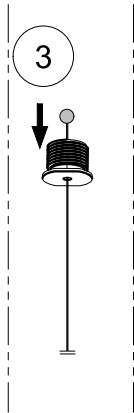
bauseits  
to be supplied on-site  
À prévoir sur place  
we wasnym zakresie  
por parte del cliente  
a cura del cliente



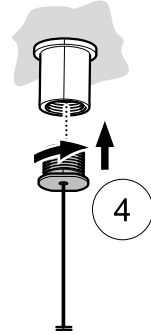
3/8



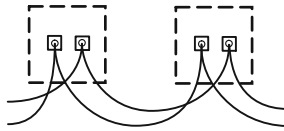
2



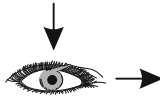
3



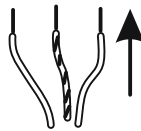
4



Volt ?



**RIDI** .....  
 AC 220-240V/50-60Hz

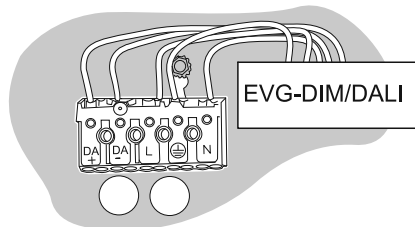
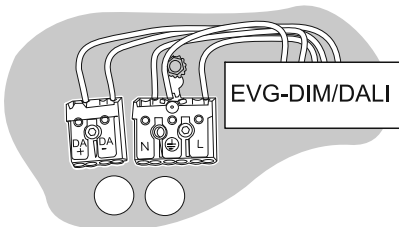


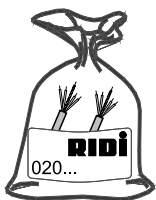
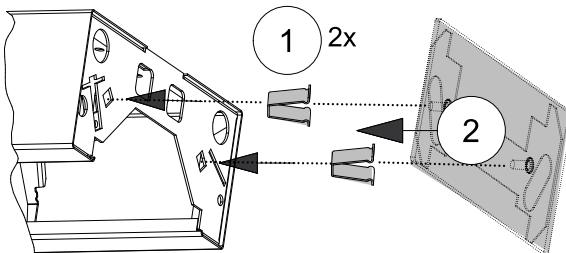
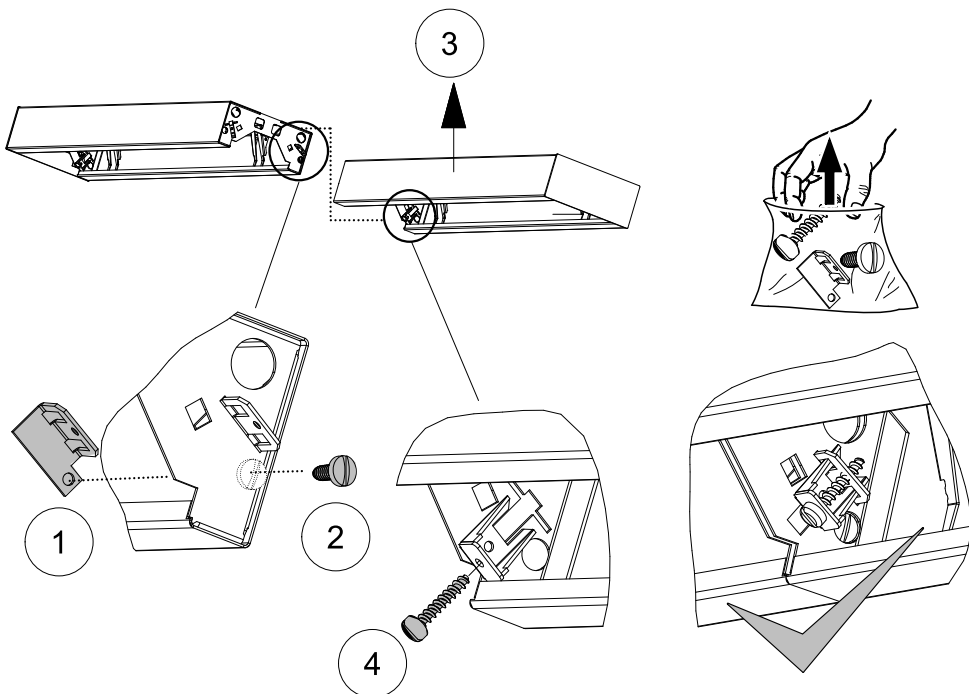
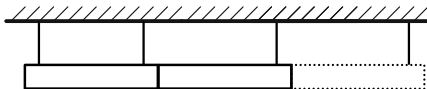
	mm	A
	0,5-1,0	9
sol.	1,5-2,5	12
0,5-2,5 mm <sup>2</sup>		

	φ	A
	0,8-1,2	9
	1,3-1,8	12
max φ1,8mm		

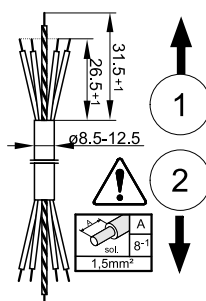
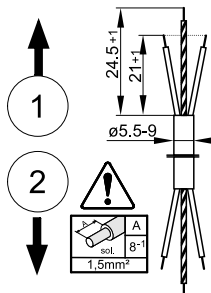
	φ	A
	0,8-1,2	9
	1,3-1,8	12
max φ1,8mm		

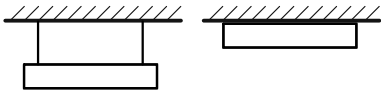
optional:





Type	Nr.
ZIDV 36/3/1,5	0201201
ZIDV 36/5/1,5	0200254
ZIDV 58/3/1,5	0201202
ZIDV 58/5/1,5	0200255





ABRFBW...

