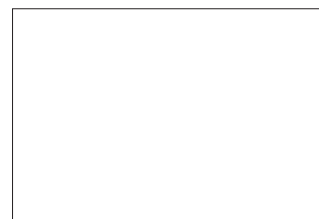
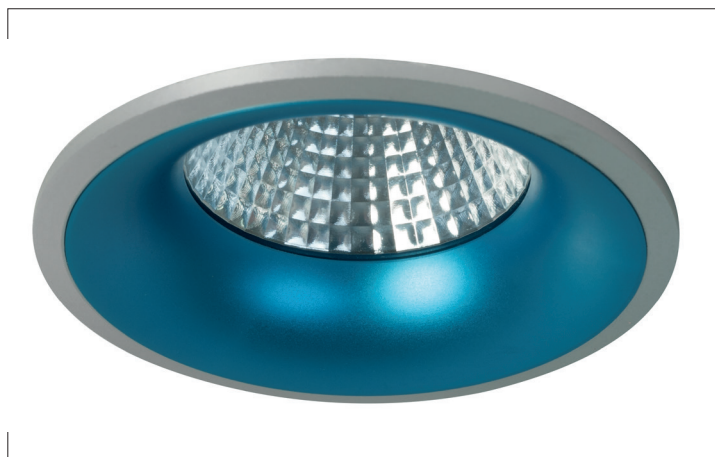


LED-recessed spot

Artikel-Nr. 12351253



LED-Einbaudownlight, mehrfarbig, round. In a compact design, for installation in tool-less rapid assembly systems Lamp holder: Plug&Play, Mounting method: Recessed mounting, Place of installation: Ceiling-mounted, Material: Aluminium, Degree of protection: according to DIN EN 60529 IP20, Protection class: (EN 61140) III, Current: 350 mA, Power: 8W, Luminous flux: 540lm, Colour temperature: 2700 K, Light colour : White, Beam angle: 38°, Adjustability: Not adjustable, With control gear: No. This luminaire contains incorporated and non-exchangeable LED light sources.

Artikel-Nr. 12351253
Stand: 19.07.2021 12:39

Colour of light	2700 K
Colour	Multi-coloured
Beam angle	38 °
Material	Aluminium
Lamp holder	Plug&Play
Power	8 W
Lamp	LED
Colour rendering	CRI > 80
Outer diameter	78 mm

Built-in diameter	70 mm
Installation depth	60 mm
Current	350 mA
Luminous flux	540 lm
Degree of protection	IP20
Protection class	III
Adjustability	Not adjustable
Circuit type	Series conduction