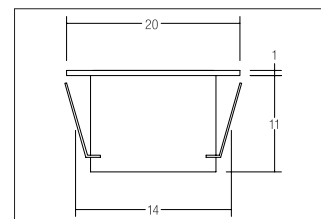


LED-floor recessed light, IP67

Artikel-Nr. 14011223



LED-floor recessed light, IP67, stainless steel, round. Recessed mounting, Floor-mounted Mounting method: Recessed mounting, Place of installation: Floor-mounted, Material: Stainless steel / Aluminium / Glass, Degree of protection: according to DIN EN 60529 IP67, Protection class: (EN 61140) III, Voltage: 12V, Power: 0.2W, Amount of light sources / fittings: 1.0 Qty, Colour temperature: 3000 K, Light colour : White, With control gear: No.

Artikel-Nr.	14011223
Stand:	25.10.2021 15:12

Colour temperature	3000 K
Colour	Stainless steel
Amount of light sources / fittings	1 Qty
Material	Stainless steel / Aluminium / Glass
Power	0,15 W
Lamp	LED
scope of delivery	Incl. 5,000 mm connecting cable
Colour rendering	CRI > 80

Control	Dimming depending on driver
Outer diameter	20 mm
Built-in diameter	14 mm
Installation depth	11 mm
Voltage	12V
Degree of protection	IP67
Protection class	III
Circuit type	Parallel conduction
Suitable for through-wiring	No